

Setting up SQL Server 2005 Express Edition for VisualGSM Enterprise

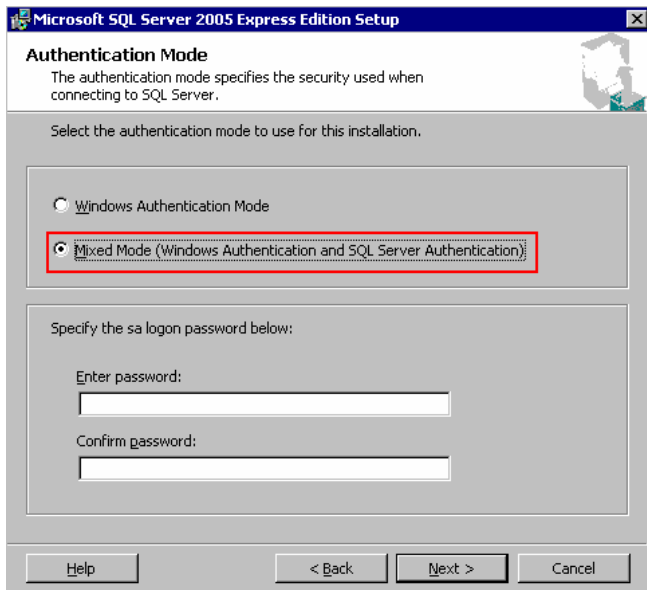
SQL Server 2005 Express Edition (SQL Express) is the **free version** of Microsoft SQL Server 2005. Unlike Microsoft SQL Server 2005, SQL Express does not come with **SQL Server Enterprise Manager**. Setting up VisualGSM Enterprise with SQL Express does not require Enterprise Manager, although you may consider upgrading to the full SQL Server version or purchase widely available 3rd party manager tools for database management, backup and replication capability.

Installation Procedure

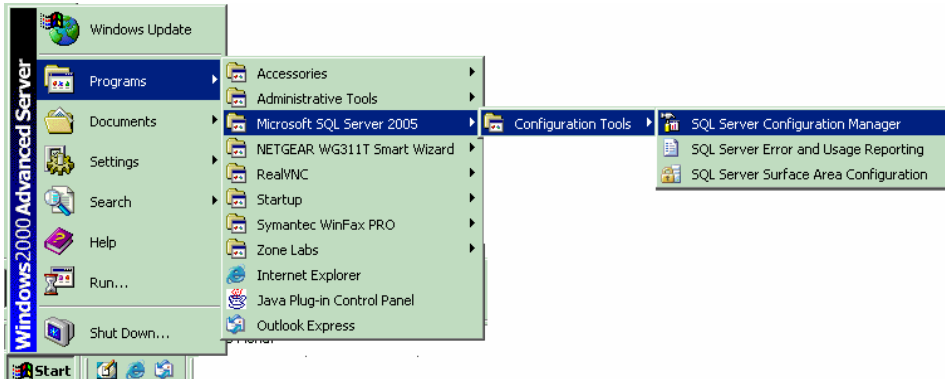
1. First download the latest version of SQL Express from Microsoft's website - <http://msdn.microsoft.com/vstudio/express/sql/download/>. If you do not have Microsoft .NET Framework 2.0, first download and install the framework.

After that, download "SQL Server 2005 Express Edition SP1", the first of two options, and proceed with the installation.

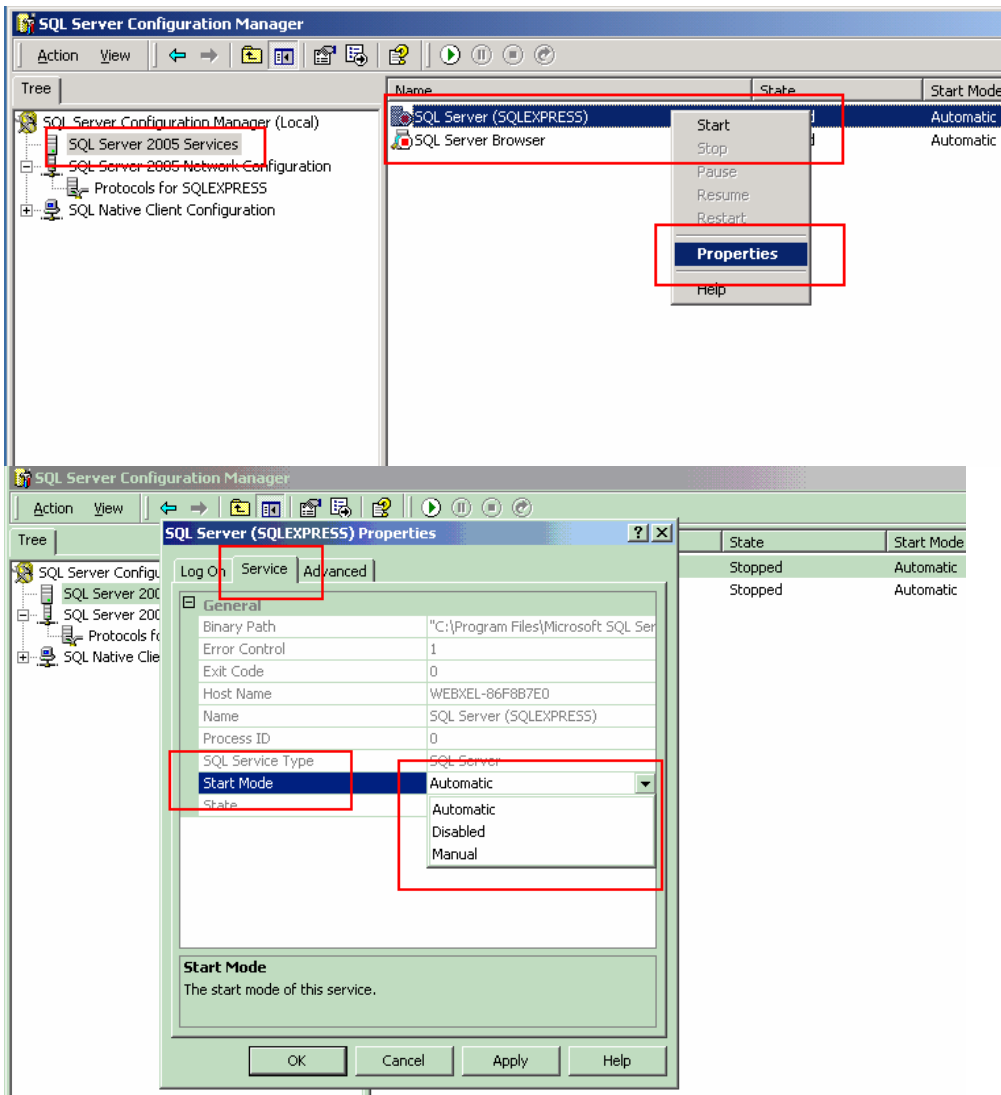
2. Select the default option for all installation parameters, except for Authentication Mode stage, whereby you must select "Mixed Mode (Windows Authentication and SQL Server Authentication)" as VisualGSM can only connect to any MSSQL Servers via SQL Server Authentication.



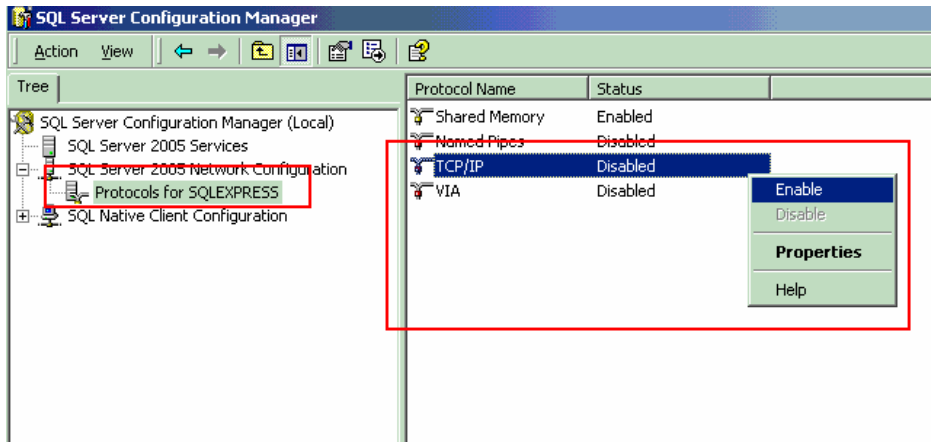
3. Once you have completed installation, you need to setup SQL Express using SQL Server Configuration Manager. Note: VisualGSM cannot use SQL Express until it has been configured.



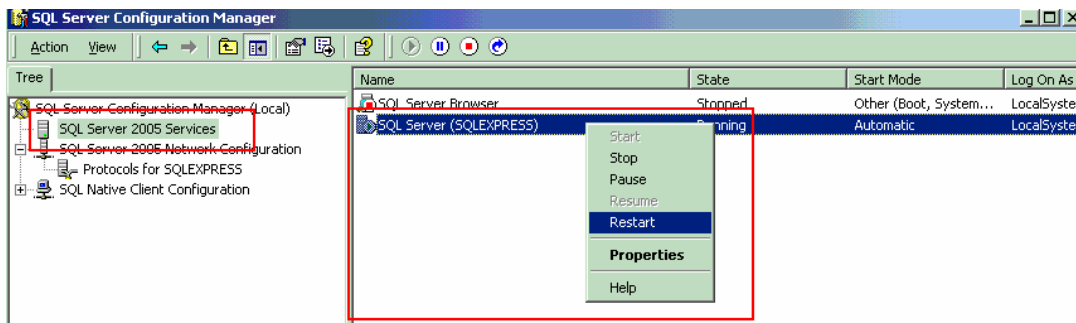
4. Select 'SQL Server 2005 Services' and then right click on 'SQL Server (SQLEXPRESS)/Properties' to set SQL Express to start automatically.



- Expand the 'SQL Server 2005 Network Configuration' tree, select 'Protocols for SQLEXPRESS' and then right click on 'TCP/IP' to Enable TCP/IP protocol.



- Restart SQL Server (Express) to commit the new changes.



7. After you have completed your SQL Express setup, you can proceed with installing VisualGSM Enterprise for MSSQL. VisualGSM installer will attempt to setup the database schema it requires during the installation itself during the initial part of the setup.

For Database Server option, please enter your computername\sqlexpress. You may try using localhost\sqlexpress (if it works).

The image shows a Windows dialog box titled "Create VisualGSM table". It contains several input fields and a "Database Driver Type" section. The "Database Server" field is highlighted with a red rectangle and contains the text "computername\sqlexpress". The "Database Driver Type" section has two radio buttons: "SQL Server" (which is selected) and "MySQL ODBC 3.51 Driver". Other fields include "ODBC Name" (VisualGSMODBC), "Database Name" (VGS MDB), "User Name" (sa), "Password" (*****), and "Script File" (c:\visualgsm\CreateDB(MSSQL).sql). There are "Create" and "Exit" buttons at the bottom right.