

Setting up MSDE or Microsoft SQL Server Desktop Edition for VisualGSM Enterprise

MSDE or **Microsoft SQL Server Desktop** is the **free version** of Microsoft SQL Server. Unlike Microsoft SQL Server, MSDE does not come with **SQL Server Enterprise Manager**. Setting up VisualGSM Enterprise with MSDE does not require Enterprise Manager, although you may consider upgrading to the full SQL Server version or purchase widely available 3rd party manager tools for database management, backup and replication capability.

Installation Procedure

1. First download the latest version of MSDE from Microsoft's website - <http://www.microsoft.com/sql/msde/downloads/download.asp>. Select the language to download.

Note:- You are advise to use the same language which you intend to use for messages sent/received by VisualGSM.

2. Run the installer. This will uncompress the setup files, e.g. setup.exe, to a folder, e.g. **c:\MSDExx**.
3. Click **Start -> Run -> cmd.exe**, and then change directory to the MSDE setup folder, e.g. **CD C:\MSDExx**.
4. Run the setup using **'Setup.exe SAPWD="password" SECURITYMODE=SQL'** (without the single quotes), where "password" is the password for 'sa' user.

New versions of MSDE installer may require you to indicate instance name, so if you get a fail response, please use the following command-line instead. Also, after you have completed installing VisualGSM Enterprise Server, remember to indicate 'Database Instance Name' which is 'VISUALGSM' in the example below, by 'editing' the logon Server when you first login VisualGSM Manager.

'Setup.exe SAPWD="password" SECURITYMODE=SQL' INSTANCENAME="VISUALGSM'

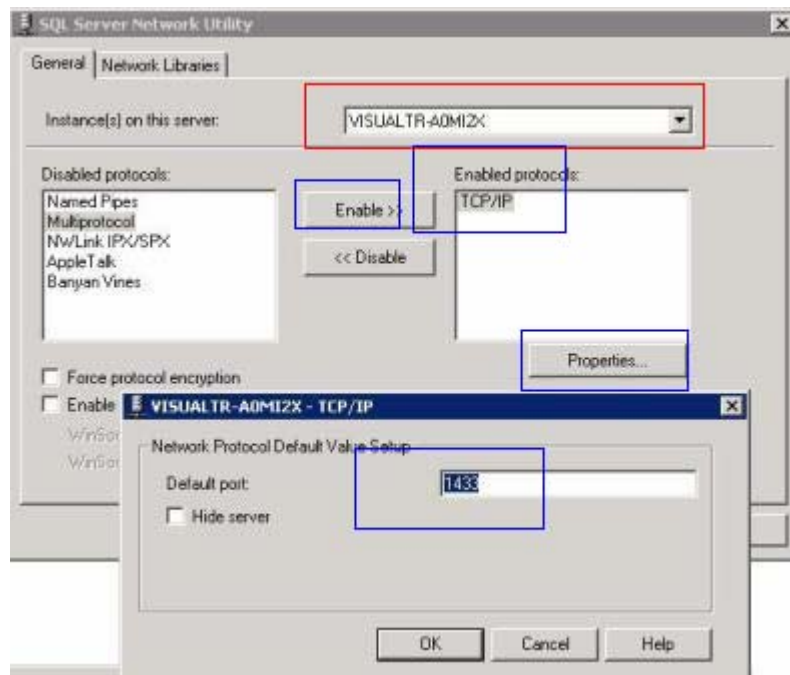
Note:-

- a. This is the user and password you will use during the create database stage of VisualGSM Enterprise installation.
 - b. If you intend to use your own password other than "password", please ensure your password is at least 8 characters long and a combination of text and numbers!**
 - c. If you have previously installed MSDE installer on your PC and MSDE installer aborts before proper installation can proceed, please proceed to c:\program files and rename the folder "Microsoft SQL Server" to "Microsoft SQL Serverbak".**
5. The installation will run in the background and takes anywhere between 3 to 15 minutes depending on PC speed. Please wait at least 10 minutes for the installation to complete if you are using Pentium III machine, and 5 minutes if you are using a Pentium IV machine.

6. Once the installation has completed, MSSQLSERVER will appear in Services menu (you can access this via **Start->Settings->Control Panel->Administrative Tools->Services**. Start **MSSQLSERVER** service. If the service cannot be started, they installation might still be in process, please wait 5 minutes and try again.
7. Go to MSSQL Server folder, e.g. **Program files\Microsoft SQL Server** and search for the **Server Network Utility Tool, SVRNETCN.exe**. Run SVRNETCN.exe and ensure **TCP/IP** has been added to the list of **Enabled Protocols**. With TCP/IP highlighted, click on properties and check that the default port is 1433.

Also, take note of server name in "Instance(s) on this server" ("VISUALTR-A0MI2X" as highlighted in RED below). You may need to use this server name during the create database stage of VisualGSM Enterprise installation.

Note:- The screen capture below is only an example, you need to check your local system.



8. Restart **MSSQLSERVER**, and proceed with VisualGSM Enterprise installation.

How to maintain MSDE

MSDE is almost exactly the same as MSSQL Server except that it does not come along with GUI administrative tools.

To administer MSDE, you can use `osql.exe` utility to execute sql statements. You can find this under `C:\Program Files\Microsoft SQL Server\80\Tools\Binn\`.

See example below:



```
C:\WINNT\system32\cmd.exe - osql -U sa
C:\Program Files\Microsoft SQL Server\80\Tools\Binn>osql -U sa
Password:
1> use vgsmdb
2> go
1> alter table loglog alter column sendfrom UARCHAR(60)
2> go
1>
```

How to change MSDE password

1. On the computer that is hosting the instance of MSDE to which you are connecting, open the command prompt window, `osql.exe`. You can find this under `C:\Program Files\Microsoft SQL Server\80\Tools\Binn\`.
2. Type the following command, and then press ENTER:

osql -U sa

At the **Password:** prompt, press ENTER if your password is blank or type the current password. This connects you to the local, default instance of MSDE by using the **sa** account. To connect by using Windows authentication, type this command: **use osql -E**

3. Type the following commands, on separate lines, and then press ENTER:

```
sp_password @old = null, @new = 'complexpwd', @loginame = 'sa' go
```

NOTE: Make sure that you replace "complexpwd" with the new strong password. A strong password includes alpha-numeric and special characters, and a combination of upper and lower case characters.

You will receive the following informational message, which indicates that your password was changed successfully:

Password changed.